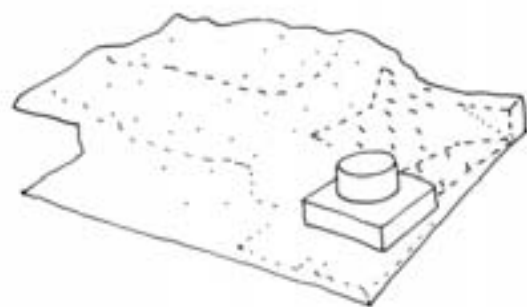


Stockholm City Library

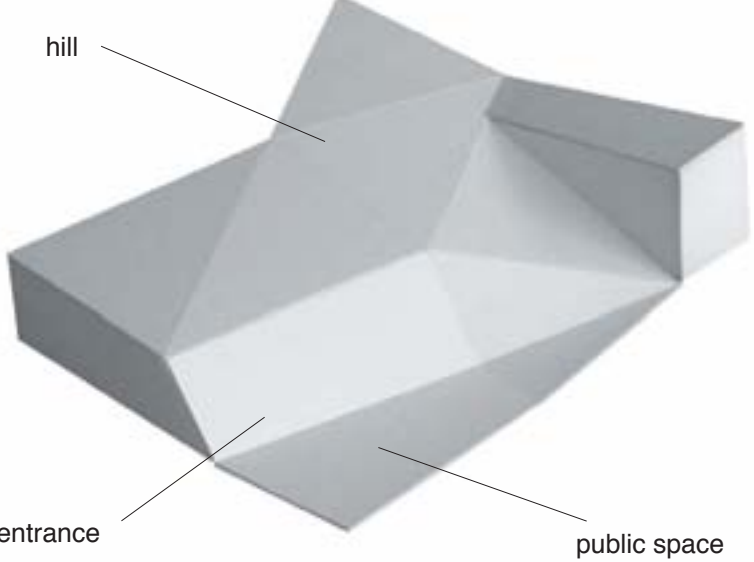
Considering the removal of the annex buildings within the competition site, the Asplund library is left 'pavilion like' at the corner of Odengaten and Sveavägen with the terraced surface of its single storey base (bazaar) forming the low point and street edge to the parkland setting of observatory hill.

The value to which Asplund's library is held and the iconic completeness to the form it presents demands spatial isolation from other built form, and establishes itself hierarchically as the principle building within the park.

It is this relationship between Asplund's library and its extraordinary landscape context that lay the seeds of our proposal.



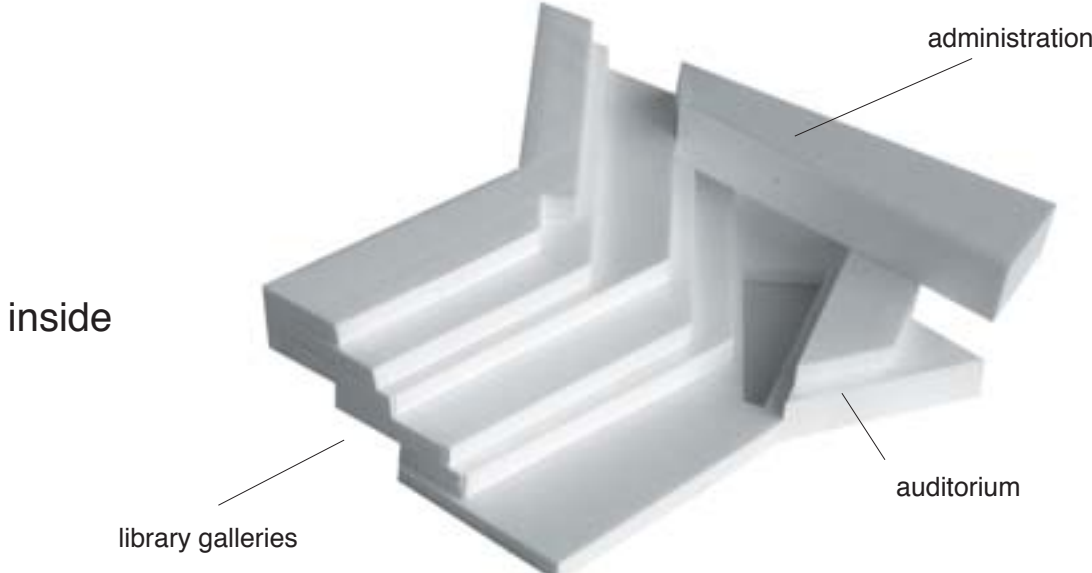
The project is conceived as an expansion to Observatory Hill, extending across the site towards Odengaten. Hollowed out to provide the accommodation of the new extension, its roof is seen as a 'blanket' of manmade landscape, with its contours and folds adjusting to the complex array of conditions it encounters around the site.



This 'wrapping form' to Observatory hill descends onto Odengaten and is met by the descending pavement approach from Odenplan metro station to form a new public space at lower ground floor, and adjacent to the western face of the existing library.

From here entrances are made to the new building as well as the existing library via its current basement. These entrances activate the south and west sides of the new public space and may in the future be complemented by a northern edge of subterranean activities and circulation beneath the pavement and link to the metro station of Odenplan.

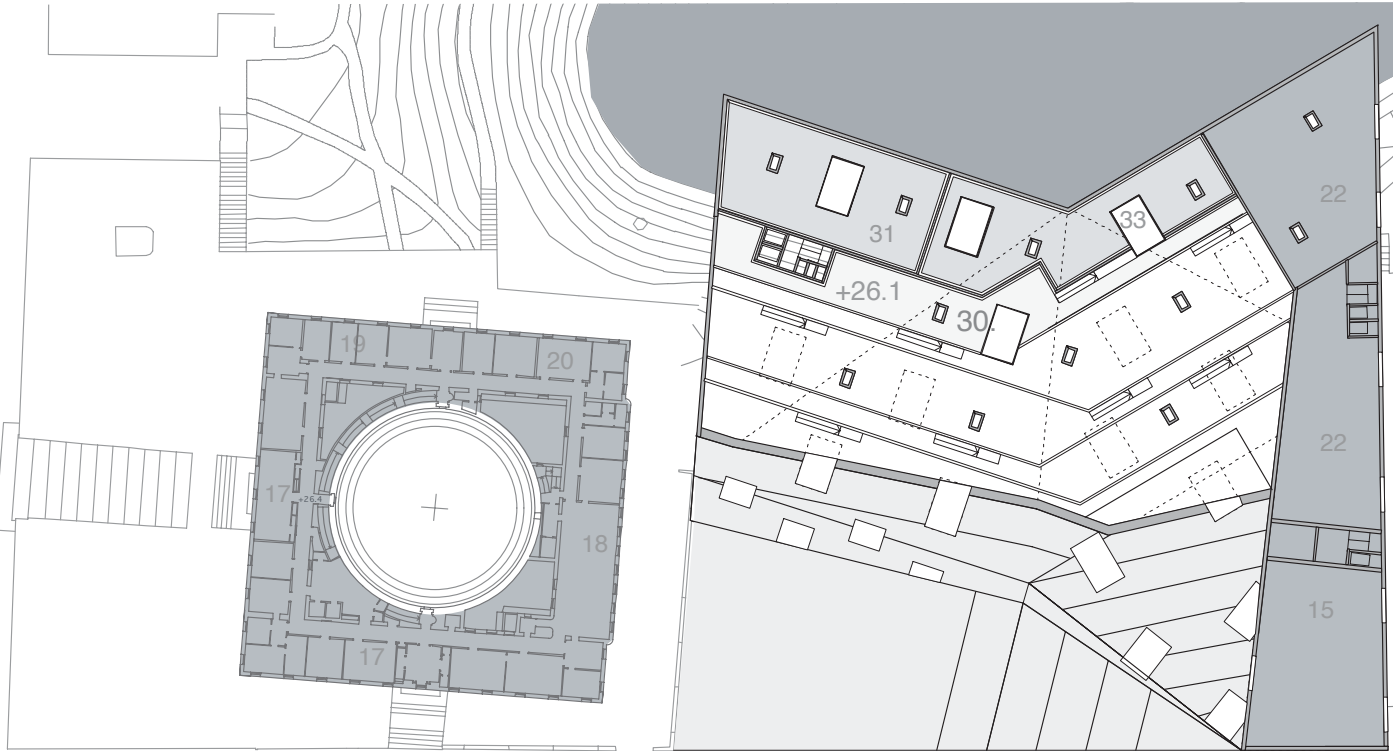
To the west of the site the 'blanket' rears upward at Gyldengatan to form a vertical edge to the site boundary, transforming from a typology of landscape into that of 'building edge' and engagement with the adjacent city block. This part of the project accommodates cellular spaces and houses the administrative areas, whilst most of the rest of the programme relate in one way or another to the hollowed out void of the 'hill'. Predominantly orientated north beneath the blanket of manmade landscape, tiers of reading rooms step upward from entrance and foyer area's towards the top of the hill.



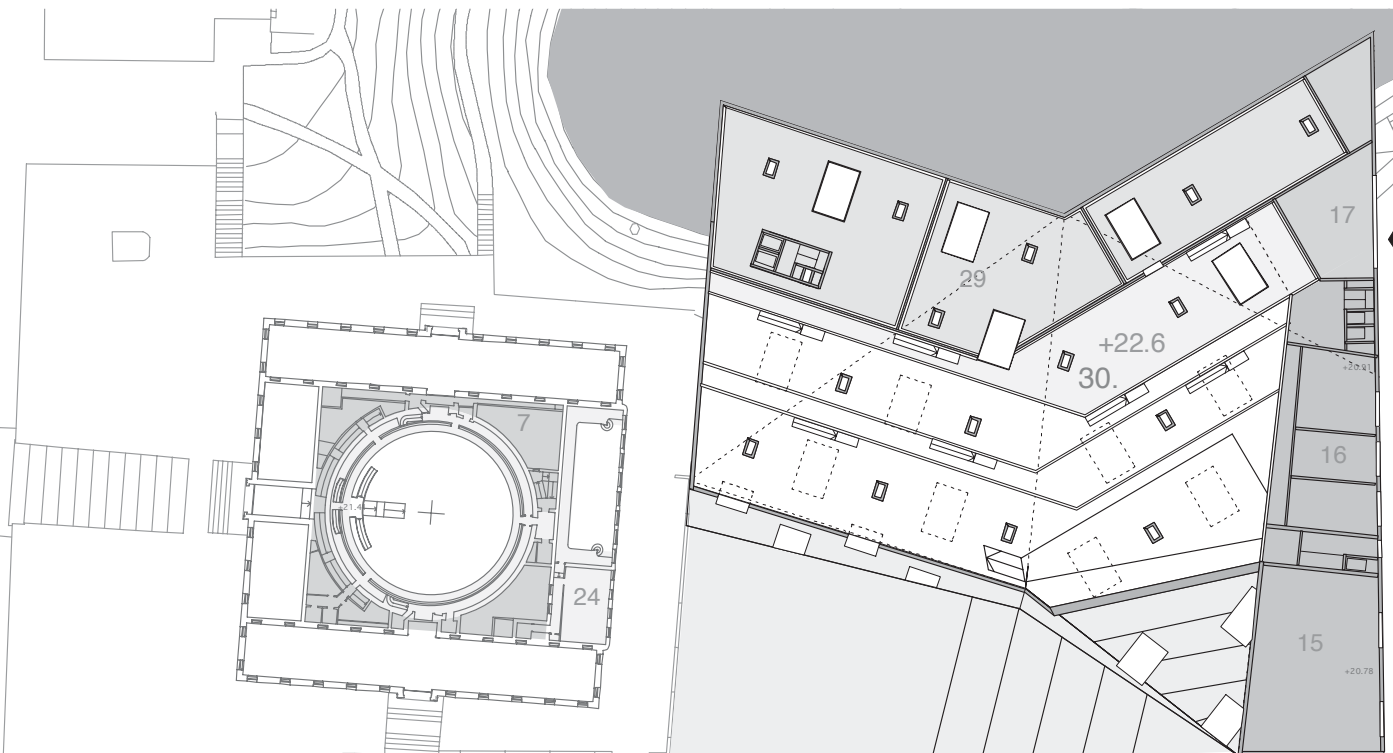
Great holes within the 'blanket' allow light to penetrate deep into the space. These holes are interwoven with the column head supports and form a part of the overall texture and character of this manmade landscape as experienced from above. Integrated with existing paths at the top of the park new paths, ramps and steps navigate visitors across and over the new landscape to connect with the street below.



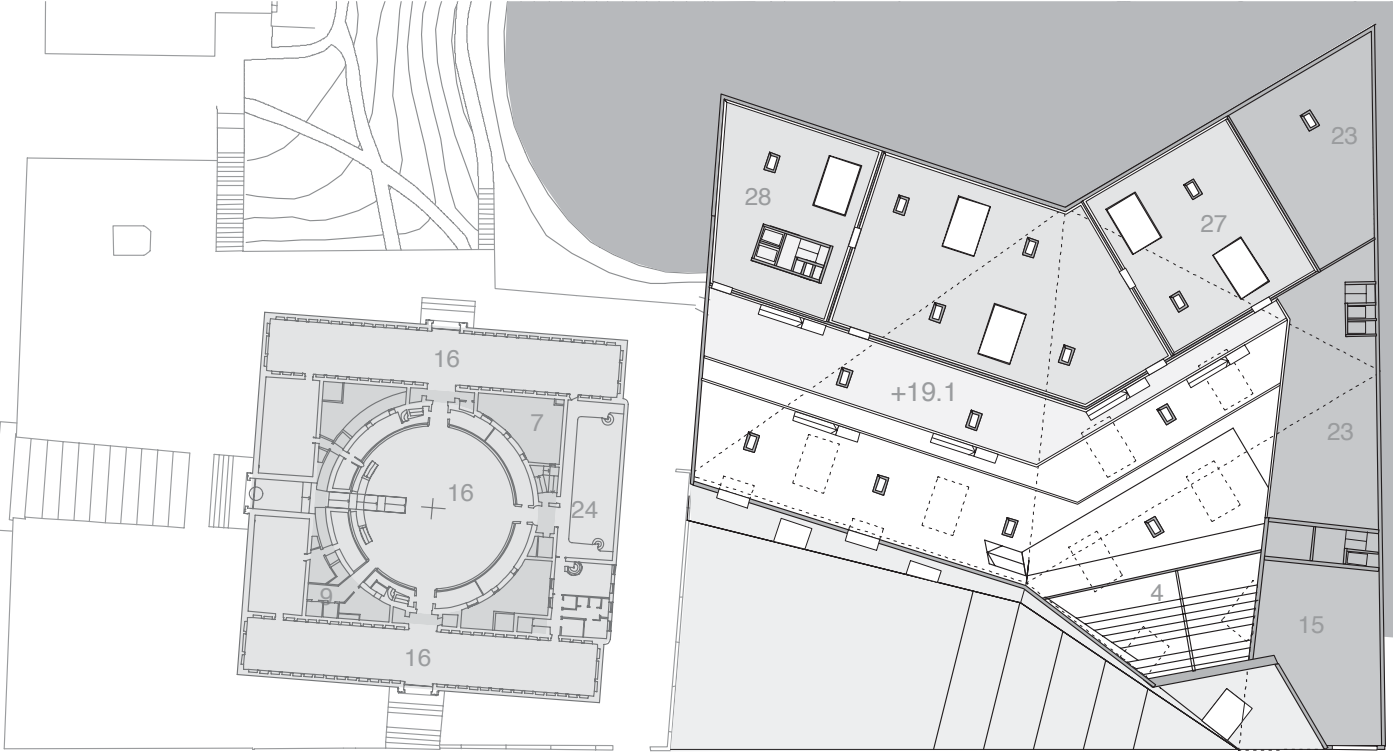
site plan 1:1000



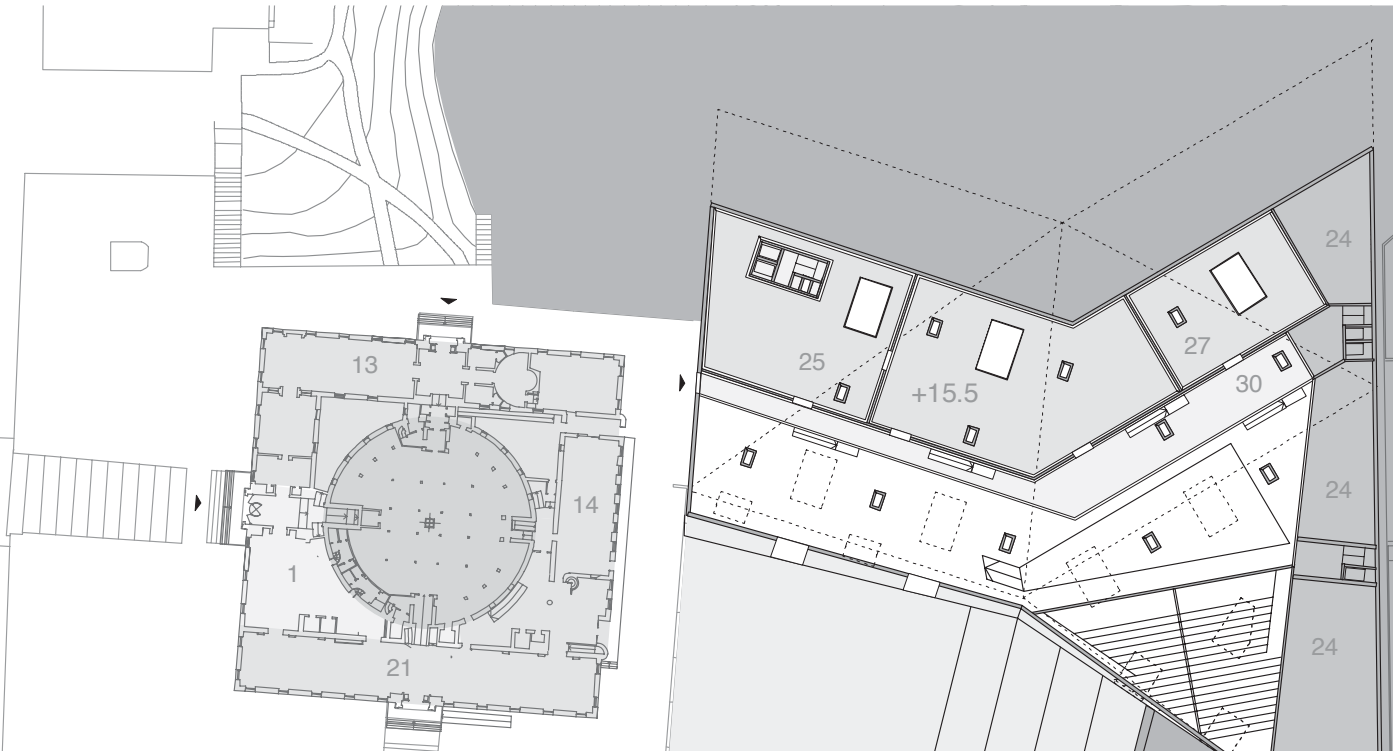
- Level 5 (+29.6)
- 30. Young People (100m2)
  - 31. Peoples & Cultures (800m2)
  - 33. Courtyard
- Level 4 (+26.1)
- 15. Swedish Institute of Children's Books 400m2
  - 17. Management 200m2
  - 18. Marketing 300m2
  - 19. Virtual 200m2
  - 20. Outreach 100m2
  - 22. Staff Areas 900m2
  - 30. Young People (100m2)
  - 31. Peoples & Cultures (1000m2)
  - 33. Courtyard



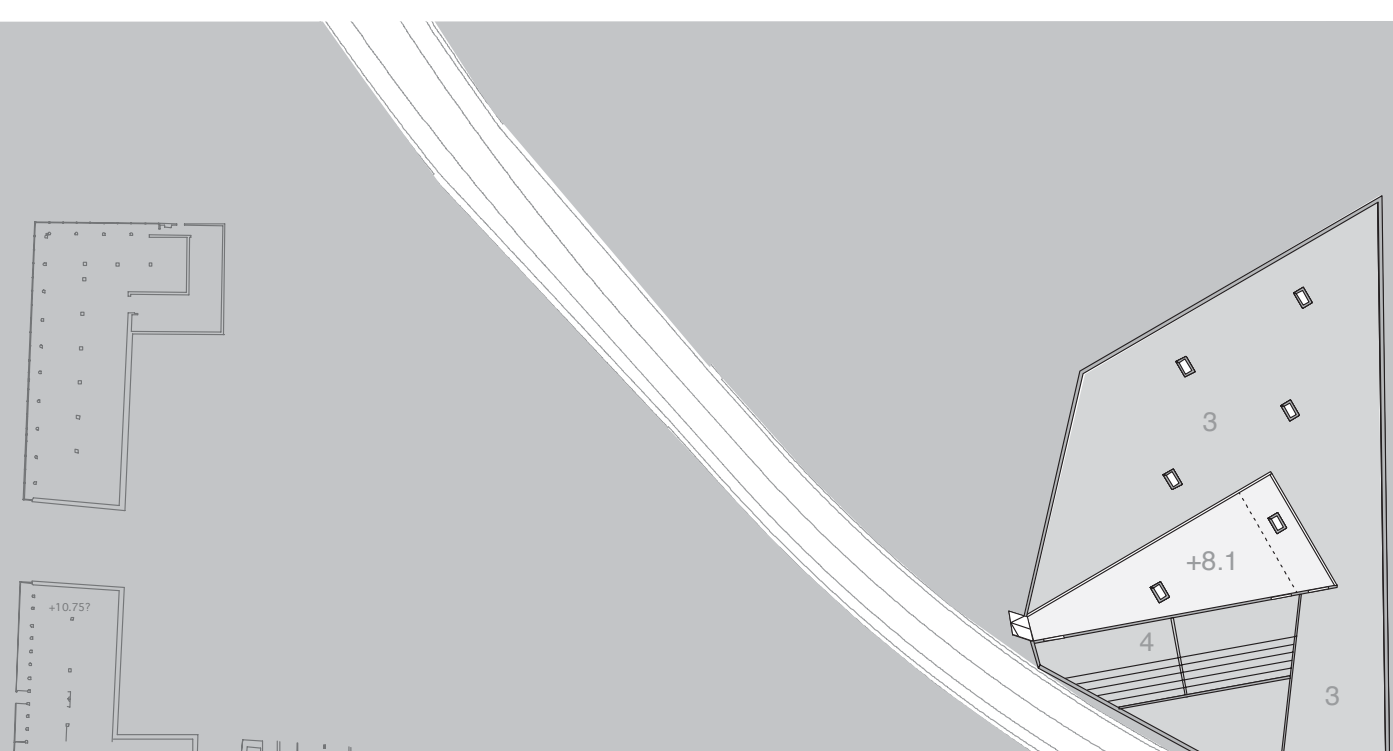
- Level 3 (+22.6)
- 7. Media Management 350 m2
  - 15. Swedish Institute of Children's Books 400m2
  - 16. Caretaker's Office 500m2
  - 17. Logistics / Loading Platform 220m2
  - 24. Reading Room (Aesthetics 350m2)
  - 29. Reading Room (Foreign Languages 1900m2)
  - 30. Young People 100m2
  - 33. Courtyard
- Level 2 (+19.1)
- 4. Auditorium (Void)
  - 7. Media Management 350 m2
  - 15. Swedish Institute of Children's Books 350m2
  - 16. Reading Room (The Arts 1900m2)
  - 23. Reading Room (Aesthetics 350 m2)
  - 24. Visit-oriented activities / offices 780m2
  - 27. Reading Room (Fiction 600m2)
  - 28. Reading Room (Nature and Technology 1400m2)
  - 30. Young People 300m2
  - 33. Courtyard



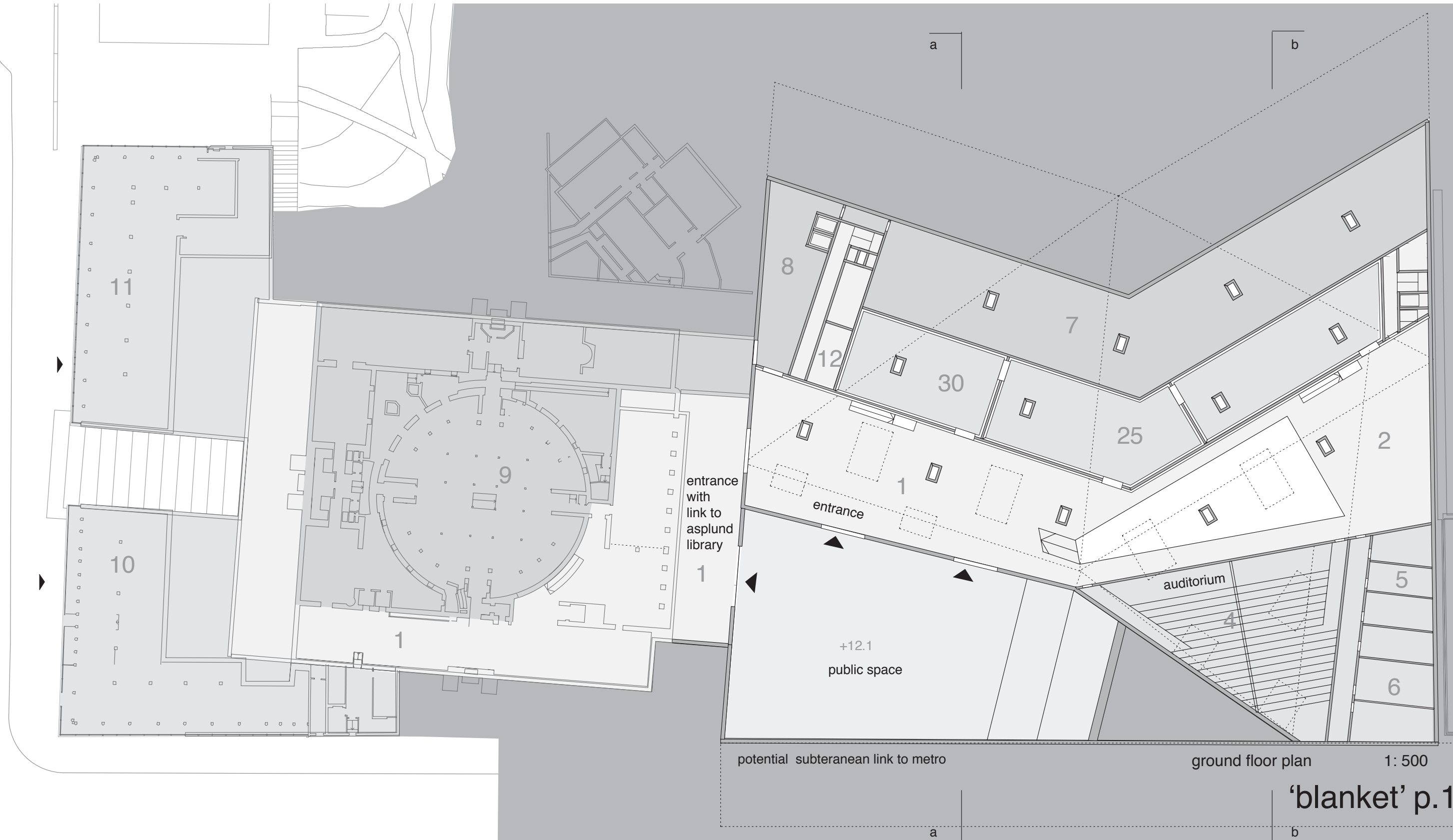
- Level 1 (+15.5)
- 1. Entrance 250cm2
  - 9. Depositories app. 615m2
  - 13. Children's Fiction 900m2
  - 14. Void
  - 21. Regional Library 300m2
  - 24. Visit-oriented activities / offices 780m2
  - 25. Reading Room (Civic Studies 900m2)
  - 27. Reading Room (Fiction 900m2)
  - 30. Young People 200m2
- Level 0 (+12.1)
- 1. Entrance 600m2
  - 2. News Zone 300m2
  - 4. Auditorium 500m2
  - 5. Teaching 200m2
  - 6. Studios 150m2
  - 7. Media management 950m2
  - 8. Sorting Machines 150m2
  - 9. Depositories app. 850m2
  - 10. Café 870m2
  - 11. Restaurant 950m2
  - 12. WC 100m2
  - 25. Reading Room (Civic Studies 800m2)
  - 30. Young People 100m2



- Level -1 (+8.1)
- 3. The Learning Zone 1750m2
  - 4. Auditorium 500m2



basement 1:1000

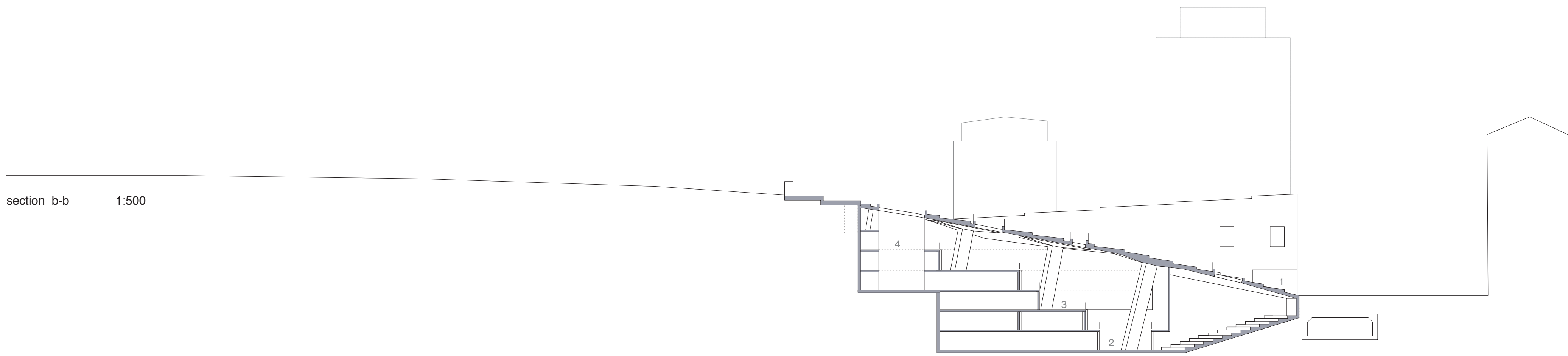


ground floor plan 1: 500

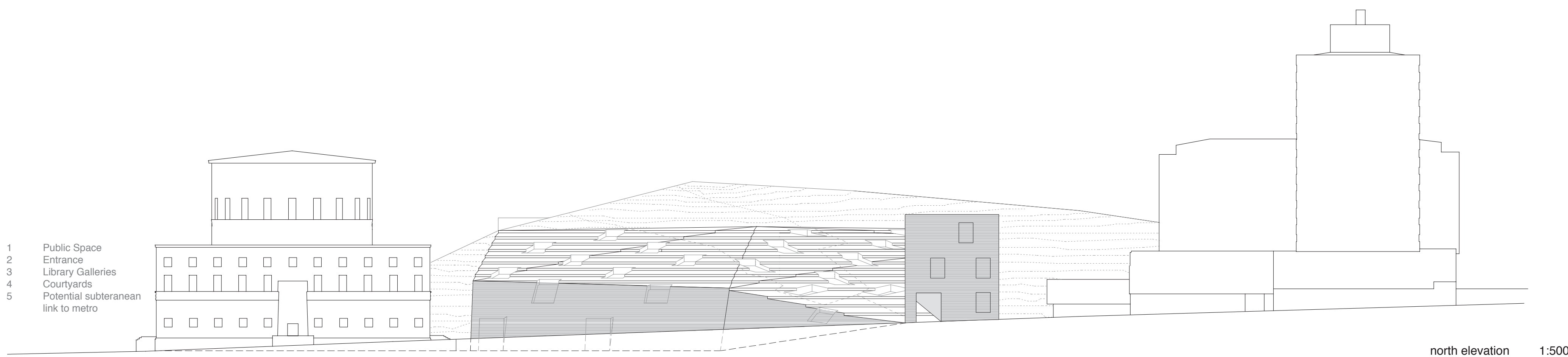




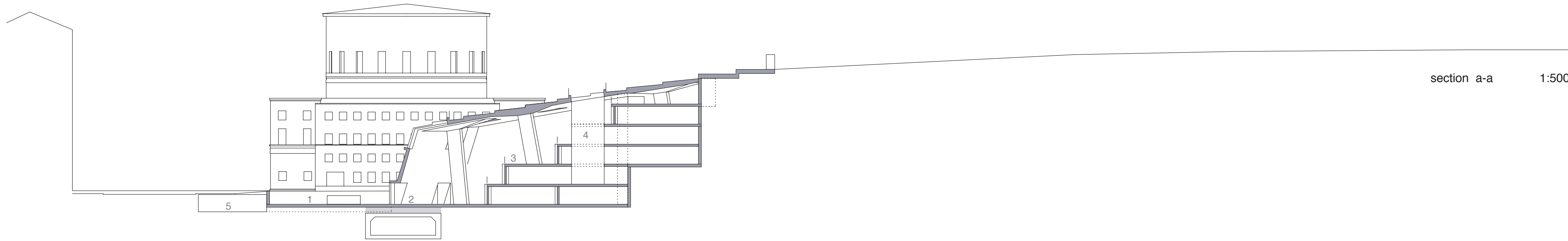
section b-b 1:500



- 1 Public Space
- 2 Entrance
- 3 Library Galleries
- 4 Courtyards
- 5 Potential subteranean link to metro



north elevation 1:500



section a-a 1:500

